

# Promi-DBS™

## Developer Board for Promi-ESD/ESD-02

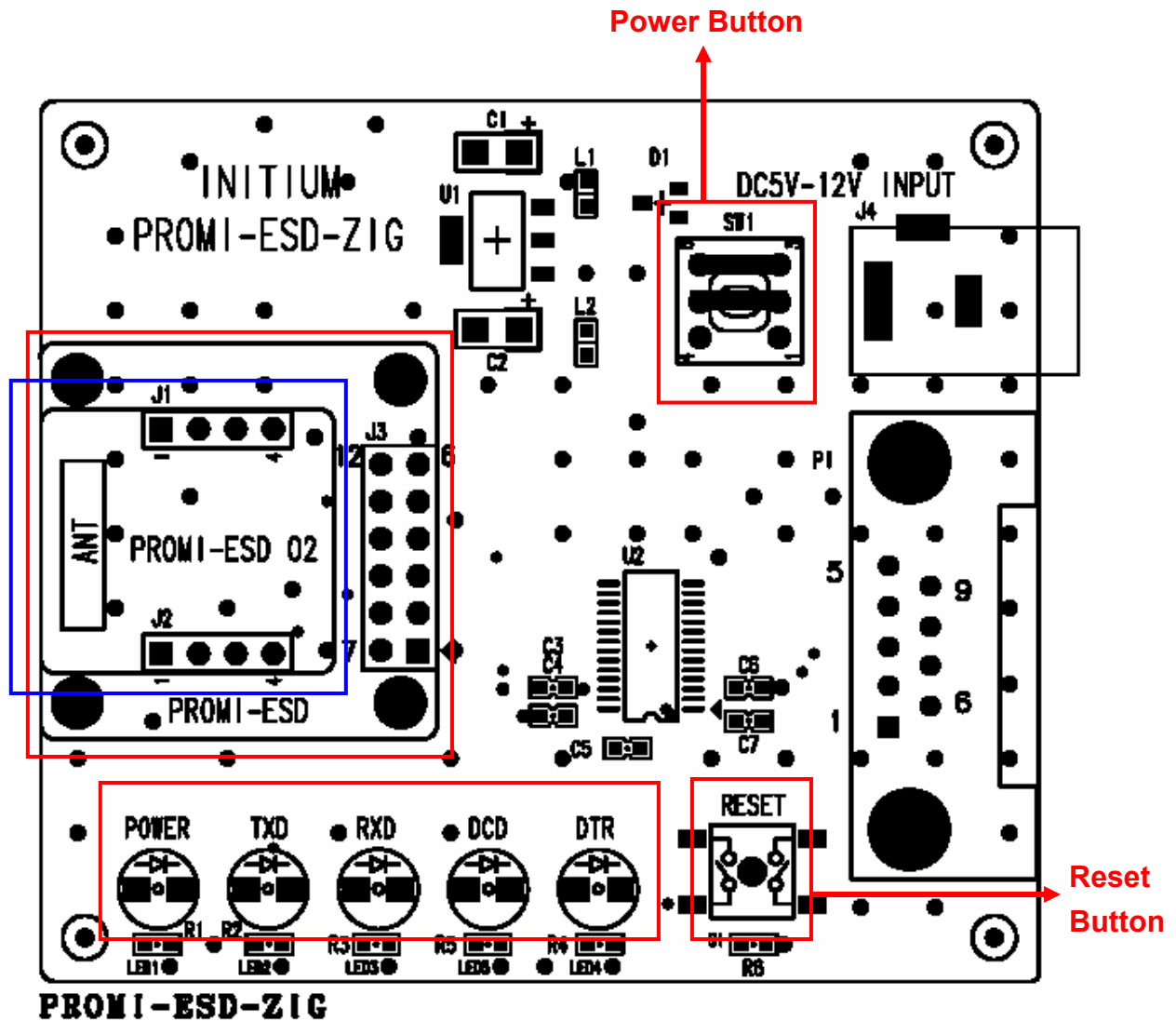
< User Manual >  
Preliminary Version



## Contents

<b>1. With Promi-ESD .....</b>	<b>3</b>
1.1 How to install	
1.2 LED operation with Promi-ESD	
<b>2. With Promi-ESD-02 .....</b>	<b>5</b>
2.1 How to install	
2.2 LED operation with Promi-ESD-02	
<b>3. How to Reset .....</b>	<b>7</b>
<b>4. Other Technical Questions: .....</b>	<b>7</b>

## Demension of Promi-DBS™



<Dimension of Promi-DBS>

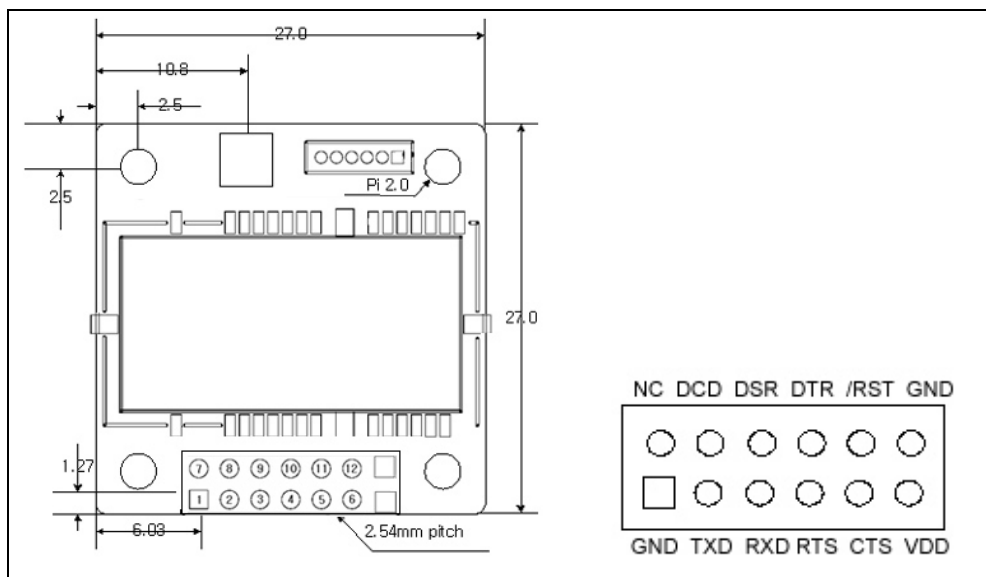
**NOTE:**

Before to start, after installing Promi-ESD or Promi-ESD-02 on the developer board, Power button should be pressed. Please confirm that Power LED is ON in Red color.

# 1. With Promi-ESD

Promi-ESD is Class 1 Bluetooth OEM board, with external cable and stub antenna.

## 1.1 How to install



<Pin Assignment of Promi-ESD>

Pin no.	Pin name	Direction	Description	Signal Level
1	GND	I	Power Ground	Ground
2	TXD	O	UART data out	TTL
3	RXD	I	UART data input	TTL
4	RTS	O	UART Ready to Send	TTL
5	CTS	I	UART Clear to Send	TTL
6	VDD	I	DC input (3.0 ~ 3.3V input)	Power
7	NC	I	No Connection	TTL
8	DCD	O	Data Carrier Detect	TTL
9	DSR	I	Data Set Ready	TTL
10	DTR	O	Data Terminal Ready	TTL
11	/RST	I	Reset (Active Low)	TTL
12	GND	I	Power Ground	Ground

## 1.2 LED Operation with Promi-ESD

LED operation of Developer Board with Promi-ESD, Class 1, as follows:

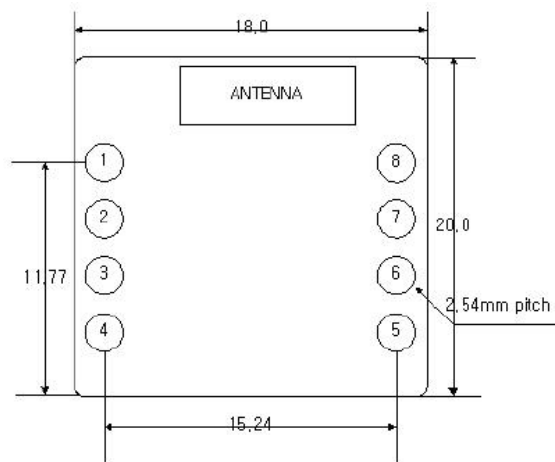
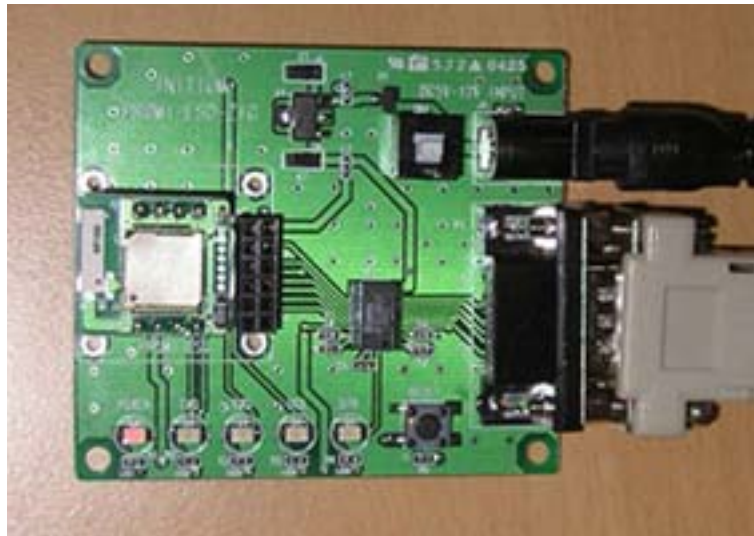
Status	Power	TxD	RxD	DCD	DTR*
When Power is supplied and power button is pressed	ON	OFF	OFF	OFF	OFF
When the counter device is sending a signal	ON	Blinking	OFF	ON	ON or OFF
When the Promi-ESD installed is sending a signal	ON	OFF	Blinking	ON	ON or OFF
<b>During Bluetooth connection only</b>	<b>ON</b>	OFF	OFF	<b>ON</b>	OFF
During Bluetooth connection & Application software by counter part (ex. HyperTerminal) is operating.	ON	OFF	OFF	ON	ON or OFF

\* Note: About DTR LED, if the counter part device is Promi-SD101, which does not have DTR/DSR lines, DTR LED on the board will not be lit.

## 2. With Promi-ESD-02

Promi-ESD-02 is Class 2 Bluetooth OEM board, with chip antenna.  
DTR/DSR lines are not available with this model.

### 2.1 How to install



Pin no.	Pin name	Direction	Description	Signal Level
1	GND	I	Power Ground	Ground
2	VDD	I	DC input (3.0 ~ 3.3V input)	Power
3	STATUS	O	Status	TTL
4	/RST	I	Reset (Active low)	TTL
5	CTS	I	UART Clear to Send	TTL
6	RTS	O	UART Ready to Send	TTL
7	TXD	O	UART data out	TTL
8	RXD	I	UART data input	TTL

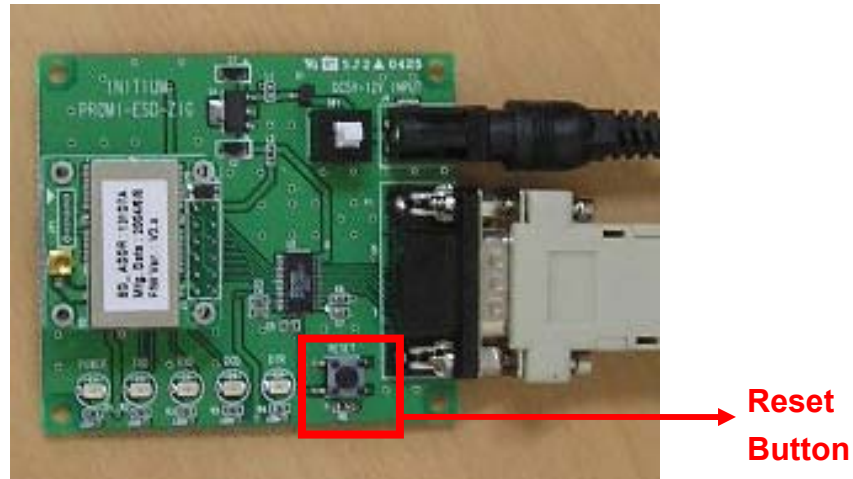
<Pin Assignment of Promi-ESD-02>

## 2.2 LED Operation with Promi-ESD-02

LED operation of Developer Board with Promi-ESD-02, Class 2, as follows:

Status	Power	TxD	RxD	DCD	DTR*
When Power is supplied and power button is pressed	ON	OFF	OFF	ON	OFF
When the counter device is sending a signal	ON	Blinking	OFF	ON	OFF
When the Promi-ESD installed is sending a signal	ON	OFF	Blinking	ON	OFF
<b>During Bluetooth connection only</b>	<b>ON</b>	OFF	OFF	<b>OFF</b>	OFF

### 3. *How to Reset*



Press the Rest button for about 3~4 seconds to RESET the installed Promi-ESD/Promi-ESD-02.

### 4. *Other Technical Questions:*

Please email to [support@initium.co.kr](mailto:support@initium.co.kr) for full technical support.